



www.jbctools.com

INSTRUCTION MANUAL



Adjustable Tweezers

Ref. AT420-A

Packing List

The following items should be included:

Adjustable Tweezers1 unit
Ref. AT420-A



Screwdriver.....1 unit
Ref. 0023074



Manual1 unit
Ref. 0022048

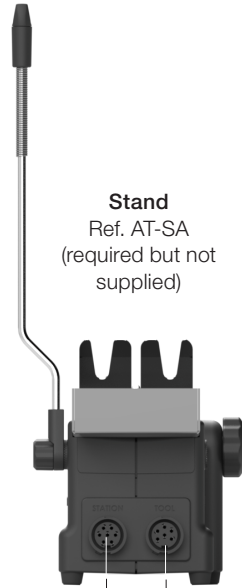


Features

Control Unit



Stand
Ref. AT-SA
(required but not supplied)



C420 Cartridges
(Required but not supplied)

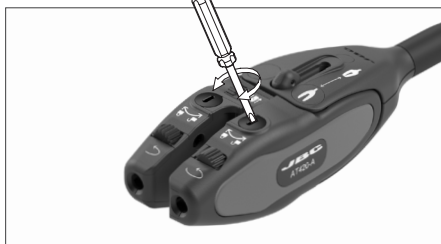


Adjustable Tweezers
Ref. AT420-A



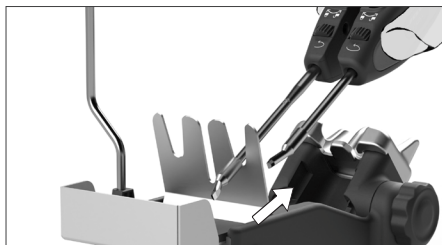
Changing cartridges

1. Unlocking



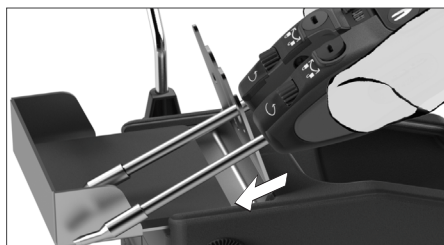
Unlock the fixing screws.

2. Removing



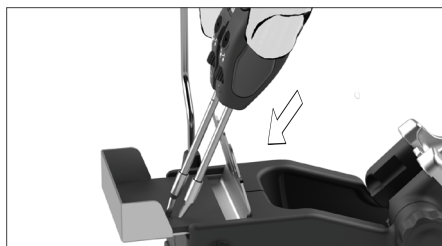
Place the cartridges in the extractor and pull the tweezers to remove them.

3. Positioning



Use the grooves to position the cartridges.

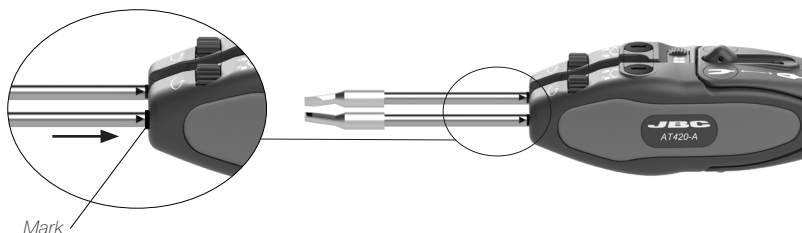
4. Inserting



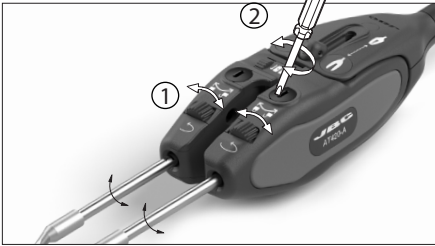
Lift up the Tweezer and press against the stand to insert the cartridge until you reach the mark*.

***Important**

It is essential to insert the cartridges as far as the mark for a proper connection.



5. Rotational Cartridge Alignment and Loking




- ① Slightly turn the wheels to align the cartridges as required. ② Lock the fixing screws*.

6. Vertical Cartridge Alignment

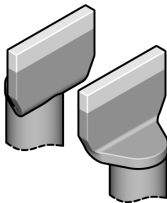


The rear wheel allows the cartridges to be equally aligned when you close the tweezers.

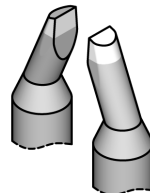
 *Once the alignment has been made, do not forget to fix the cartridges by tightening the fixing screws. A single turn of the screw is required to get them fixed.

C420 Cartridge Range

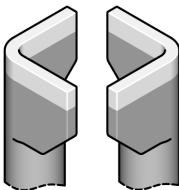
The **AT420-A** works with **C420** cartridge range. Find the model that best suits your soldering needs in www.jbctools.com



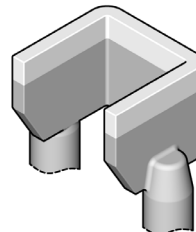
Tweezer Blade



Tweezer Chip



Tweezer QPF



Tweezer
Customized

For Special Cartridges contact with our distributor.

Safety



It is imperative to follow safety guidelines to prevent electric shock, injury, fire or explosion.

- Do not use the units for any purpose other than soldering or rework. Incorrect use may cause fire.
- The power cord must be plugged into approved bases. Be sure that it is properly grounded before use. When unplugging it, hold the plug, not the wire.
- Do not work on electrically live parts.
- The tool should be placed in the stand when not in use in order to activate the sleep mode. The soldering tip, the metal part of the tool and the stand may still be hot even when the station is turned off. Handle with care, including when adjusting the stand position.
- Do not leave the appliance unattended when it is on.
- Do not cover the ventilation grills. Heat can cause inflammable products to ignite.
- Avoid the contact of flux with skin or eyes to prevent irritation.
- Be careful with the fumes produced when soldering.
- Keep your workplace clean and tidy. Wear appropriate protection glasses and gloves when working to avoid personal harm.
- Utmost care must be taken with liquid tin waste which can cause burns.
- This appliance can be used by children over the age of eight and also persons with reduced physical, sensory or mental capabilities or lack of experience provided that they have been given adequate supervision or instruction concerning use of the appliance and understand the hazards involved. Children must not play with the appliance.
- Maintenance must not be carried out by children unless supervised.

Notes

This image shows a single sheet of white paper with horizontal ruling lines. The lines are evenly spaced and run across the width of the page. There are no margins, text, or other markings on the paper.

Specifications

- Weight: 110 g (0.2 lb)
- Max. power per cartridge: 80W

Complies with CE standards
ESD Safe

JBC

Warranty

JBC's 2 year warranty covers this equipment against all manufacturing defects, including the replacement of defective parts and labour.

Warranty does not cover product wear or misuse.

In order for the warranty to be valid, equipment must be returned, postage paid, to the dealer where it was purchased.

Get 1 extra year JBC warranty by registering here:

**<https://www.jbctools.com/productregistration/>
within 30 days of purchase.**



This product should not be thrown in the garbage.

In accordance with the European directive 2012/19/EU, electronic equipment at the end of its life must be collected and returned to an authorized recycling facility.

